



8/6-8 Tramway Street Rosebery NSW

2 1 1

#### The Lifestyle:

Located on the boarder of Rosebery and Mascot this recently renovated apartment offers both comfort and convenience. Located conveniently in the surrounding area is local cafe, shops, schools and Sydney Kingsford Smith Airport.

**Type** : Unit

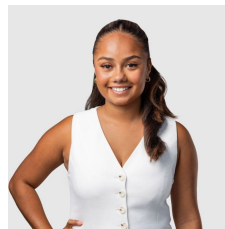
**Price** : \$690 pw

**View** : <https://www.agentsandco.com.au/lease/nsw/east-ern-suburbs/rosebery/residential/unit/8689115>

#### Property Features Include:

- + Well Maintained Unit
- + Two spacious bedrooms both with built-in wardrobes
- + Open plan living and dining area
- + Near New Paint & Carpet
- + Well maintained security building and single lock-up garage

[For full version visit the website](https://www.agentsandco.com.au)



**Jocelyn Peters**  
02 9314 2100



**Ally Masi**  
02 9314 2100